

Activity-11: How to describe animal shape?

Aim: Observation of different animals.

Questions to begin with:

Is Shiva (any student name) an animal or a plant?

How does Shiva look? What are his various body parts?

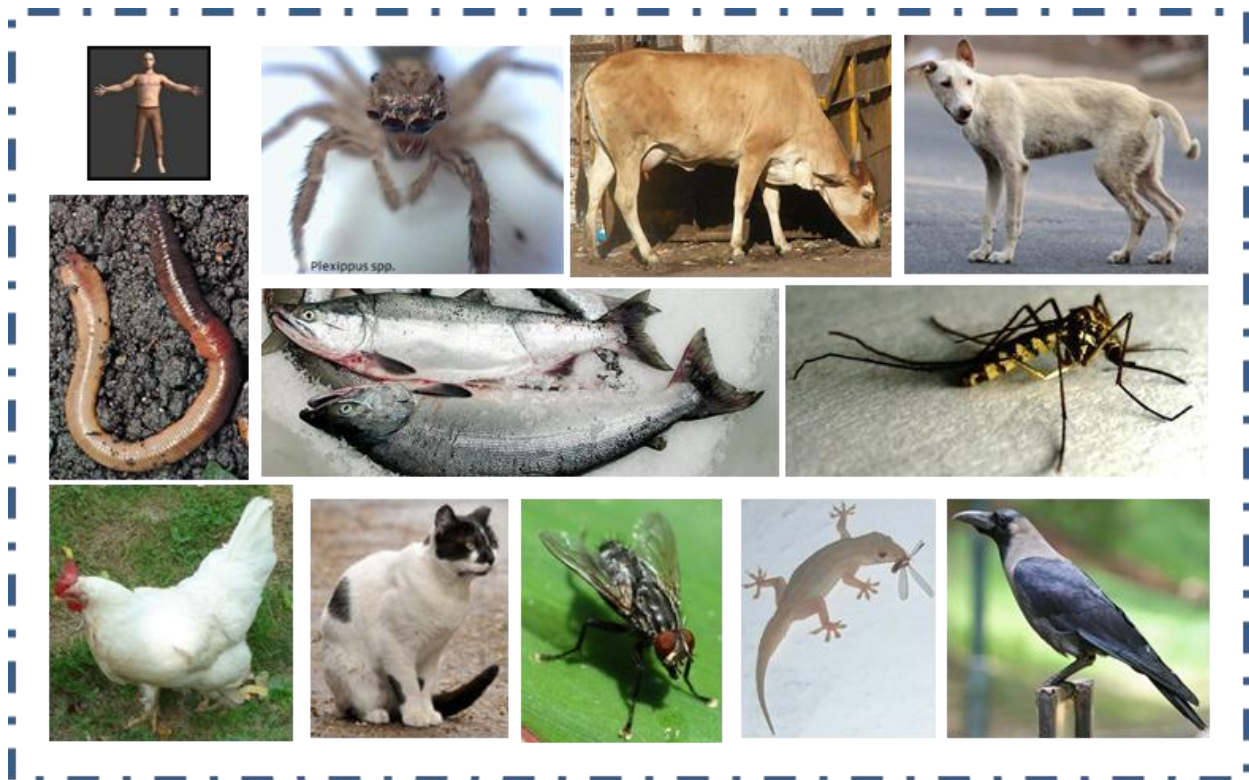
Is Tommy (any pet animal-Dog) an animal?

How does Tommy look? What are his/her various body parts?

Procedure:

Pick any animal in your surroundings, in your house or on your body and describe it. Make sure you include one of the following kinds of animal in your study:

Worm (earthworm)	Mosquito	Housefly
Spider	Chicken	Dog
Cat	Cow	Fish
Lizard	Crow	Human



The following instruction-set will come very handy in every study of biology that deals with describing animals visible to the un-aided eye irrespective of the level of study. it is a set of absolutely elementary questions.

Instructions for observing animals:

How to describe living beings without knowing their names?

This questionnaire is a useful guide.

1. Is it a living being or is it a non-living thing?
2. Does it move or is it still?
3. What is the size of it in term of human hand, or cm, mm, feet, metres?
4. Does it fly?
5. Does it crawl?
6. Does it burrow?
7. Will it react, get scared, attack or run away when touched?
8. What colour is it? Does it have many colours?
9. What is the surface like? Smooth, wrinkled, tough, soft, hard?
10. Where does it live?
11. Does it hunt?
12. Does it make its own food?
13. Is it hunted? If so, how does it escape its predator?
14. Is it poisonous?
15. Does it live in groups or live a lonely life?
16. When is it active in a day?
17. Does it have eyes, nose, mouth, ears, teeth and tongue?
18. Does it move fast or slow?
19. How many babies does it give birth to?
20. Does it take care of its babies always?
21. How many of it is present in a given area?
22. Does it have wings or feathers?
23. How high does it fly?
24. What other living beings is it similar to?
25. Does it have 4 proper legs (limbs)?
26. What does it eat? How many times in a day?
27. How long does it live?
28. Does it have hair?

29. Can it hide?
30. What is the overall shape: is it longer than wider or vice versa, rounded, thin stick-like?
31. How much does it weigh?
32. Do you see it all round the year?
33. Where else does it stay?
34. Can it swim?
35. Does it learn new habits fast or slow?
36. Can it be domesticated? Can it live with humans in cities? Or does it need wilderness?
37. How long does it take to eat food? Does it eat all its food at once?
38. Does it store food for a later day?
39. Are its appearances similar to its surroundings?
40. Does it lay eggs or give birth to live animals directly?
41. Does it give milk?
42. Can it jump?
43. How long can it live without food?
44. When does it mate?
45. Does it migrate? Does it travel long distances to a new area and start living?
46. Does it come back to original home after migration?
47. What climate does it prefer? Does it prefer coldness, warmth, moist, heavy rains, dry cold, dry hot?
48. Does it live in pairs after having babies? Or does it separate?

Try to draw or describe the animal using the following geometric shapes. A sample has been done for you.

Straight line	Thick line	Circle	Ellipse
Arc	Triangle	Square	Rectangle
Polygons	Spiral	Torus	Sphere
Hemisphere	Cone	Pyramid	Cylinder
Octagon	Parallelepiped	Rhombus	Trapezium
Kite	Semicircle	Star	Prism
Crescent	Alphabet shapes: aGq	Symbol shapes: %^#	Number shapes: 6,3,

